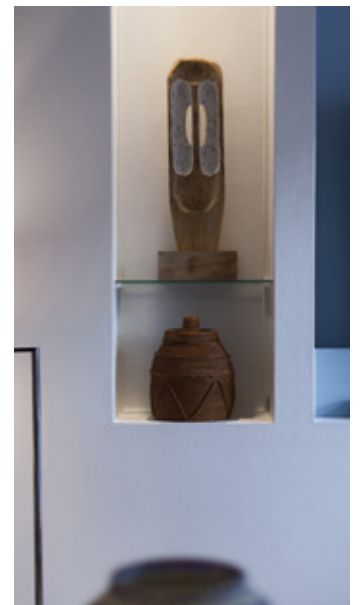




Tavira 1

THE QUIET LABYRINTHINE STREETS OF TAVIRA, A PREVIOUSLY MOORISH HISTORIC CITY, ARE THE STAGE FOR THIS TOFFY'S PROJECT IN THE SOUTH OF PORTUGAL. A VERY NARROW BUT DEEP HOUSE WAS DECONSTRUCTED AND RENOVATED, CREATING OUTSIDE PATIOS AND TERRACES THROUGH WHICH THE SUN LIGHT IS ALWAYS INVITED IN. USING THE HIGHEST STANDARD MATERIALS AND THE EVER PRESENT SENSE OF STYLE AND DETAIL, THIS SUMMER HOUSE CALLS FOR MOMENTS OF RELAXATION AND ENTERTAINMENT. A SWIMMING POOL ON THE TOP FLOOR TERRACE WITH VIEWS OVER THE CITY AND THE RIVER THAT CROSSES IT IS THE FINAL SIGNATURE OF THIS UNIQUE HOME.

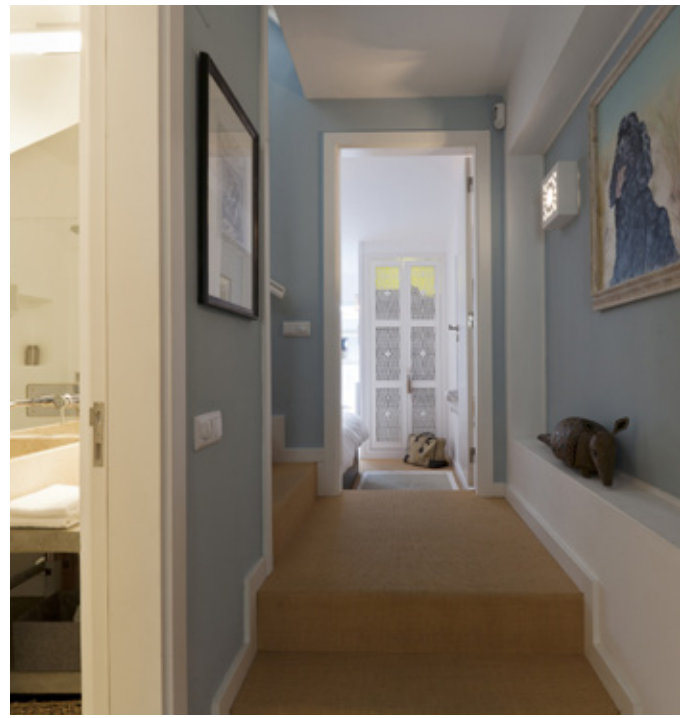




TOFFY

8 6 4

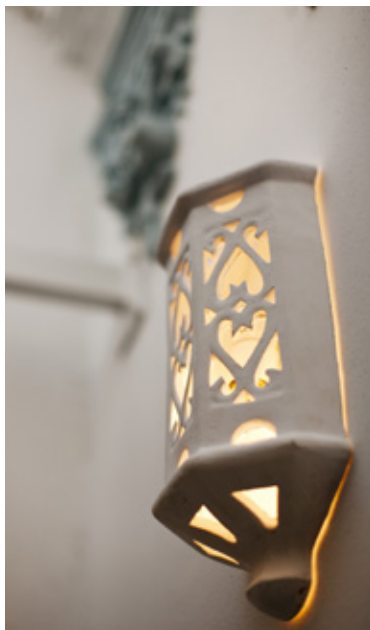
Rua Dom Duarte 2, 4 FRT 1100-198 Lisboa, Portugal.



TOFFY

8 6 4

Rua Dom Duarte 2, 4 FRT 1100-198 Lisboa, Portugal.



Location

Tavira historic center,
rua Joao Vaz Corte
Real Tavira, Portugal.

Area

160 m²

Typology

Living room
with terrace
Dining room
Kitchen
2 ensuite bedrooms
with patios
2 bathrooms
Roof terrace with
swimming pool
City view

Year

2017

TOFFY

8 6 4

Rua Dom Duarte 2, 4 FRT 1100-198 Lisboa, Portugal.